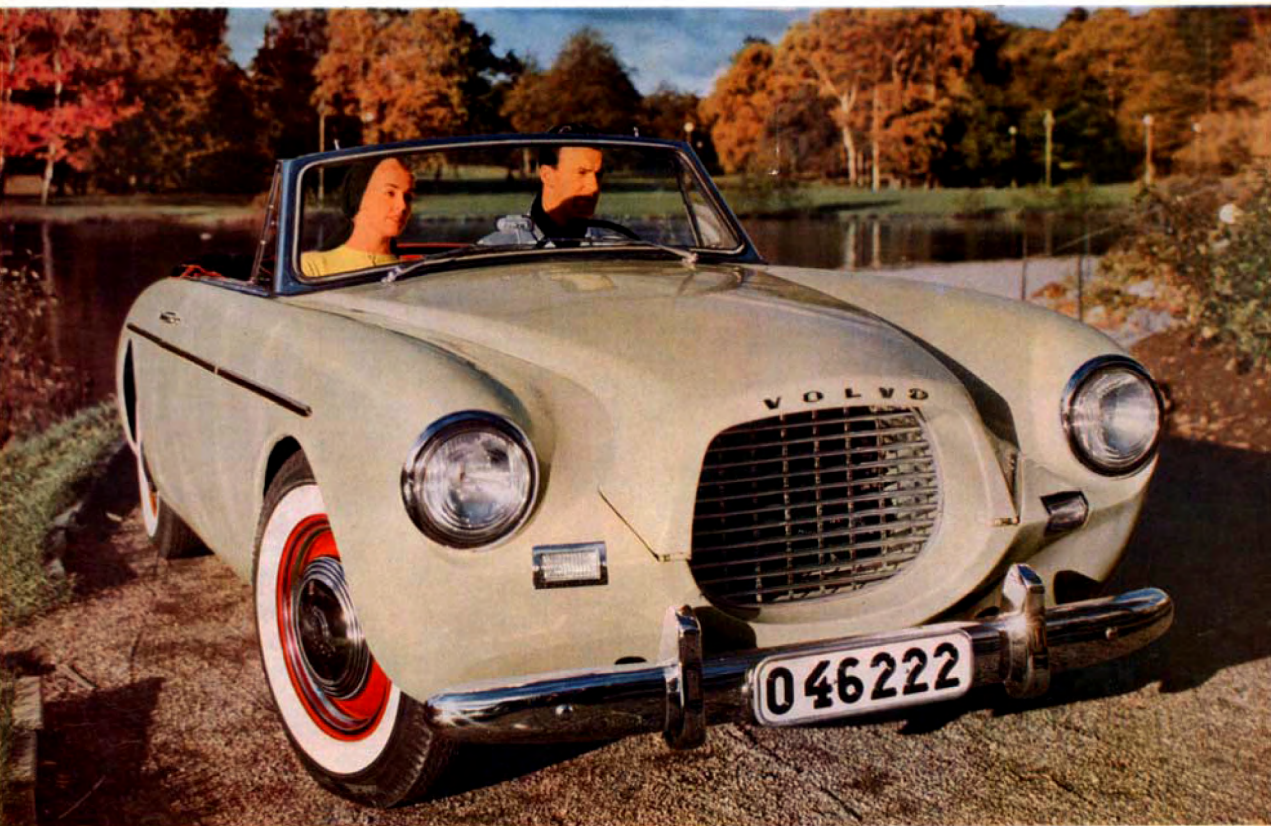


VOLVO SPORT



AB VOLVO, EXPORT DEPARTMENT, GÖTEBORG, SWEDEN



THE VOLVO SPORT

ENGINE: Four cylinder, valve-in-head engine, type B14A. Bore 2.955 in., stroke 3.15 in., displacement 86.65 cu. in., compression ratio 7.8:1. Output 70 brake horsepower at 5500 r.p.m., torque 75.9 lb.ft. at 3000 r.p.m. Twin SU horizontal carburetors. Aluminium pistons with oval-ground skirts. Chromed compression rings. Replaceable connecting rod bearings and main bearings. Hardened crankshaft running in leadbronze bearings. Standard equipment includes full-flow oil filter. Oil capacity of engine including oil filter 7³/₄ US pints.

CLUTCH: Spring-loaded single dry disk clutch. Friction area 52.7 sq. in.

TRANSMISSION: Cast-iron transmission case with aluminium cover. Three forward gears and reverse, 2nd and high synchromesh. All gears are helically cut for silent operation. Oil capacity of transmission 1 US pint.

RATIOS:

Low	3.23:1	High	1:1
Second	1.62:1	Reverse	2.92:1

PROPELLER SHAFT: One-piece propeller shaft. Carefully balanced for vibration-free operation. Propeller shaft diameter 3".

REAR AXLE: Powerful drive shafts. Rear axle of hypoid type. Shafts supported in tapered roller bearings. Ratio 4.56:1. Oil capacity 2 US pints.

STEERING GEAR: Cam and twin lever type for precision steering. Ratio 12:1. Three and a quarter turns of steering wheel from left lock to right lock.

SUSPENSION: Front: Independent links with coil springs.
Rear: Support arms and coil springs.

SHOCK ABSORBERS: Double action telescopic shock absorbers front and rear.

BRAKES: Self-adjusting, self-centering hydraulic brakes. Handbrake operates separately on rear wheels. Total brake lining area 132 sq. in.

WHEELS AND TIRES: Pressed steel disk wheels with sturdy projections for hub plate attachment. Tubeless low pressure tires 5.90-15" with white side-walls.

CHASSIS: Frame of seamless tubular steel.

BODY: Plastic body with top which fits into body when lowered. Adjustable ventilator windows and two retractable windows on each side.

GASOLINE TANK: Located at the rear. Capacity 15 US gallons.

ELECTRICAL EQUIPMENT: Ignition switch and ignition coil are connected by means of a thief-proof armored cable. Starting switch built into

ignition switch. There is also a special position for the ignition switch through which all the electrical equipment is available for use when the engine is switched off. 40-amp fan-cooled generator with automatic voltage control system. Powerful headlamps designed for even road illumination. Hand-operated headlamp beam control under steering wheel. Blinker directional signal lamps with optical and acoustic warning devices. Indicator lamp for headlamp beams. 6-volt battery with a capacity of 85 amp. hr.

INSTRUMENTS AND OPERATING CONTROLS

The instrument panel in front of the driver contains the following instruments: revolution counter, speedometer with mileometer and trip reset, water temperature gage, oil pressure gage, oil temperature gage, ammeter and fuel gage. The instrument lighting can be varied by means of a rheostat switch. Plastic-rimmed steering wheel with horn ring. Direction signal control lever with automatic cancellation under steering wheel. Pulltype handbrake lever on propeller shaft tunnel. Centrally-located gearshift lever in floor.

OTHER EQUIPMENT INCLUDES: Double electric king-size windshield wipers. Two sun visors. Cover over top when lowered into body. Ashtray. Cigarette lighter. Complete tool kit and jack. Spare wheel with tire in luggage compartment. Full-flow oil filter.

DIMENSIONS AND WEIGHTS: Wheelbase 94¹/₂", overall length 166", front tread 51", rear tread 51¹/₂", overall width 62", kerb weight 2129 lb.

The factory reserves the right to alter price, constructional details and equipment.

